

Eco Friendly Gardening

‘He who plants a garden,
plants happiness!’

Chinese proverb

It doesn't matter how big or small your garden is, it's really easy to make it eco friendly.

To garden in an eco-friendly way, you should conserve water, use natural pest and fertilizer methods, compost organic waste, choose native or drought-tolerant plants, and support pollinators and wildlife. This leaflet will give you lots of tips on the best way to do this.



Conserving Water

- Install a water butt. If you have the space, install more than one.
- Mulch – Mulching is done to improve soil health, conserve moisture, suppress weeds, regulate soil temperature, and prevent erosion. Cover your soil with either a biodegradable mulch e.g. wood chips, leaf mould, compost or a non-biodegradable mulch e.g. gravel, slate or pebbles.
<https://www.rhs.org.uk/soil-composts-mulches/mulch>
- Plant drought tolerant plants. There are lots to choose from.
<https://www.rhs.org.uk/plants/for-places/drought-resistant>
- Manage the water you have more efficiently -
<https://www.rhs.org.uk/gardening-for-the-environment/water>

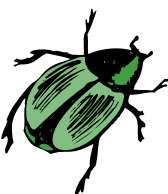


Pest Control



Stop using chemicals and start using natural control methods. Encourage hedgehogs, toads, ladybirds and birds into your garden and they will eat a lot of the pests.

- Use netting and other barriers to keep pests off plants.
- Companion planting – plants marigolds, rosemary, mint and basil as the smell deters pests.
- Plant nasturtiums as the black fly and caterpillars will eat them and leave your plants alone....hopefully!
- For more information on organic pest control -
<https://www.gardenorganic.org.uk/expert-advice/garden-management/pests-and-diseases/organic-pest-control-for-fruit-and-vegetables>
- Nematodes are microscopic creatures which kill pests.
<https://www.gardenorganic.org.uk/expert-advice/garden-management/pests-and-diseases/nematodes>



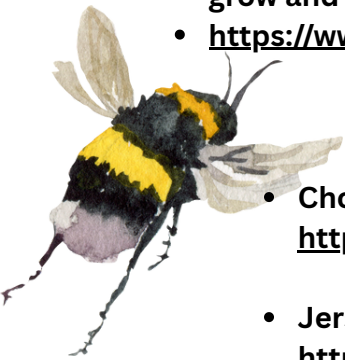


Weed Control



Stop using chemical weedkillers, they are killing our pollinators

- Make your own weedkiller from washing up liquid, vinegar and salt. It won't harm wildlife, but it will kill persistent weeds
- Weeds are just plants in the wrong place, don't rush to pull them up, they provide food for our native insects
- No Mow May is a UK-originating conservation campaign, championed by Plantlife, that encourages people to not mow their lawns for the month of May to benefit wildlife, particularly pollinators like bees and butterflies, by allowing wildflowers and grasses to grow and provide habitat and food.
- <https://www.plantlife.org.uk/campaigns/nomowmay/>



Encourage Pollinators



- Choose native plants, they're the ones our native pollinators like best:-
<https://www.wildlifetrusts.org/actions/best-plants-bees-and-pollinators>
- Jersey's Pollinator Project:-
<https://www.gov.je/Environment/Ecoactive/Campaigns/Pages/PollinatorProject.aspx>
- Install a bug hotel. You can easily make them from old bamboo sticks cut down to short lengths and bound together. A couple of old logs in a quiet corner of your garden will also become home to all sorts of creatures.
- Ivy which flowers and produces berries is really easy to grow and is a haven for pollinators in the autumn.
- Report any sightings of Asian hornets to help protect local beehives.
<https://www.gov.je/Environment/LandMarineWildlife/ProblemSpecies/pages/asianhornets.aspx>

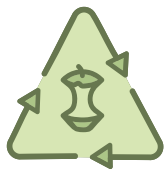


Butterflies

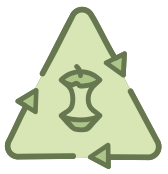


- Butterflies also pollinate plants and they're a good indicator to the health of the environment
- Leave a few piles of leaves in the autumn for the larvae to overwinter
- Plant native flowering plants to encourage butterflies
<https://www.rhs.org.uk/wildlife/flowers-for-butterflies>





Composting



- Composting is a great way to get rid of household food waste and to produce fertiliser for your garden.
- www.greatgreensystems.com/
- Every 1kg of homemade compost typically saves over 0.1kg fossil CO2 emissions, which could save more than 5.1 kg carbon, per gardener, every year.
- If you don't have room for a compost heap you can dispose of garden waste at the garden recycling area at La Collette, it's open Wednesday to Sunday 7.30am - 4.30pm and is free! They turn the garden waste into soil improver which is for sale in bulk.

Trees



if you have space in your garden plant a tree.

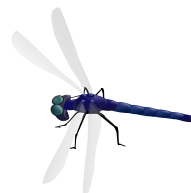
There are dwarf varieties for small spaces. You can even find trees which will grow in a pot!

<https://www.rhs.org.uk/plants/types/trees/smaller-gardens>

- Trees provide a home for all sorts of wildlife and are a great way to attract birds to your garden. Put up a bird nesting box and encourage them to stay. Leave some food out for them during the winter.
- Trees also provide valuable shade and they absorb carbon from the atmosphere. If all 30 million UK gardeners planted a medium-sized tree in their community, school, workplace or garden and nurtured it to maturity, they would store enough carbon equivalent to drive you more than 11 million times around our planet.



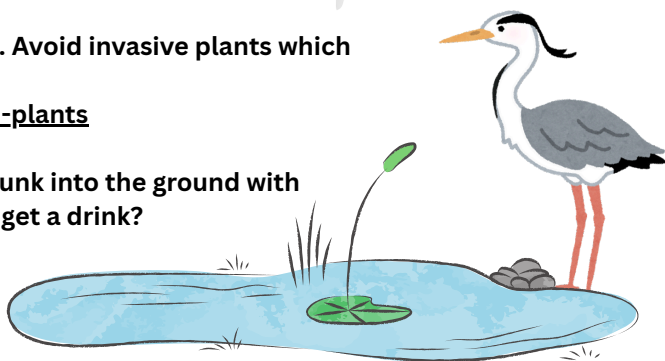
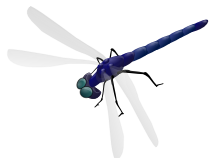
Ponds



- If you have the space install a pond. They're a haven for all sorts of wildlife.
- Choose native pond plants to encourage native wildlife. Avoid invasive plants which can ruin habitats.

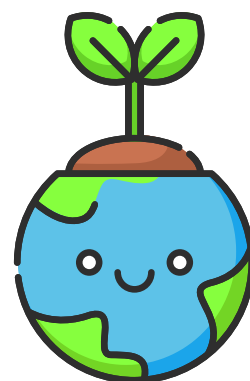
<https://www.rhs.org.uk/ponds/pond-plants>

- If you're short on space how about a small water bowl sunk into the ground with some gravel at one side so that insects and wildlife can get a drink?



Peat

- Go peat free - Peatlands are the world's largest carbon store on land. They provide valuable ecosystems for plants and animals and act like sponges, reducing the risk of flooding.
- When we take peat for our gardens, carbon is released and habitats are damaged. Keeping peat in bogs – not bags – is a crucial part of the fight against climate change. Our planet's billions of acres of peat hold more carbon than all the world's forests combined.



Vegetables



Grow your own vegetables.



- If you only have a tiny space why not grow herbs and tomatoes in pots?
- Go organic and eat vegetables without chemicals:-
<https://www.soilassociation.org/take-action/organic-living/why-organic/>



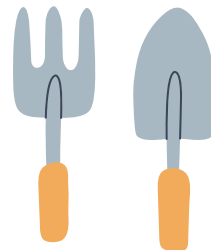
Easy crops for beginners to grow

<https://sowmuchmore.co.uk/2023/01/13/easy-crops-for-beginners-and-how-to-grow-them/>

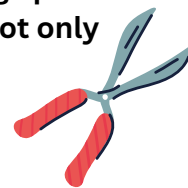




Tools



- Switch your old petrol garden tools for electric ones. An average petrol power tool emits 0.848 kg carbon per litre of petrol used. It's not only carbon, they emit harmful particulate and noise pollution too.



- Don't throw away your empty plant pots, donate them to Potty Eco Pots, they have collection points all over the island and at the recycling centre where you can drop them off and if you need pots you can help yourself. A really simple initiative to reduce single use plastic.



They have drop off and pick up points at
Trinity & St. John parish halls,
Scoop, Waitrose Vallee des Vaux and
St. Saviour recycling at Rue des Pres.



<https://www.vibrantjersey.je/destination/potty-eco-pots-a-plant-pot-environmental-initiative/>

If you have Facebook you can follow Potty Eco Pots - <https://www.facebook.com/pottyecopots>

Wildlife Fun for the Whole family

If you don't have a garden don't worry, you can visit Birdsong Garden which is open to everyone and it's free!

<https://www.facebook.com/BirdSongGardenJersey>

The Wetlands Centre, Toad Trail and Reg's Garden are also great fun for kids!

<https://www.freefamilyfunjersey.com/nature-adventures-free-family-fun-in-jersey>

Wild Gardening

Leave a corner of your garden untidy as a haven for wildlife.

It also cuts down the amount of work you have to do!

